

# GDRH Family Communication

OCTOBER 2021

## COVID-19 UPDATES

Thank you to everyone for being so diligent and safe as we brought students back to in-person learning. Last week we had NO Covid cases reported in our schools!

The September dashboard has been updated and is available in the [District Communication Link](#). The new October dashboard is now linked under COVID on the main page of the [website](#). District Nurse Kimberly Hess will be provided a more detailed update at the October 20th school board meeting.

Stay safe everyone!

**COVID-19 IS STILL HERE.  
YOUR ACTIONS STILL MATTER.**



Wear  
a mask



Wash  
your hands



Practice social  
distancing



Get  
vaccinated

## HOW TO GET IN TOUCH WITH US

Just a reminder that you can click on [CONTACT](#) on our website to reach us!

### SCHOOL DISTRICT OFFICES

2600 W. Mill Road  
Glendale, WI 53209  
[414-351-7170](tel:414-351-7170)  
  
Alyson Weiss, Superintendent  
[414-351-7170](tel:414-351-7170) ext. 2103  
[alyson.weiss@glendale.k12.wi.us](mailto:alyson.weiss@glendale.k12.wi.us)



### GLEN HILLS MIDDLE SCHOOL


2600 W. Mill Road  
Glendale, WI 53209  
[414-351-7160](tel:414-351-7160)  
Attendance Line: [414-351-7060](tel:414-351-7060) ext. 2110  
  
Anna Young, Principal  
[414-351-7160](tel:414-351-7160) ext. 2112  
[anna.young@glendale.k12.wi.us](mailto:anna.young@glendale.k12.wi.us)  
  
Willie Williams, Associate Principal  
[414-351-7160](tel:414-351-7160) ext. 2139  
[willie.williams@glendale.k12.wi.us](mailto:willie.williams@glendale.k12.wi.us)



### PARKWAY ELEMENTARY SCHOOL

5910 Milwaukee River Parkway  
Glendale, WI 53209  
[414-351-7190](tel:414-351-7190)  
Attendance Line: [414-351-7190](tel:414-351-7190) ext. 2003  
  
Haydee Smith, Principal  
[414-351-7190](tel:414-351-7190) ext. 2002  
[haydee.smith@glendale.k12.wi.us](mailto:haydee.smith@glendale.k12.wi.us)  
  
Ryan Kroeger, Associate Principal  
[414-351-7190](tel:414-351-7190) ext. 2031  
[ryan.kroeger@glendale.k12.wi.us](mailto:ryan.kroeger@glendale.k12.wi.us)



 English >

## NEWS FROM THE TEACHING AND LEARNING DEPARTMENT

### UPDATE SECURLY ADD-ONS:

We are pleased to share that the Glendale River Hills School District has parent access for monitoring district devices at Glen Hills and Securly 24 monitoring along with our internet filtering system for all school technology including chromebooks and desktop computers. The internet filtering system we currently use is called Securly and it features several components to help ensure the safety of our students and staff.

The overarching component is the Securly Filter which is used to block access to inappropriate websites and material on our school-issued devices. In addition to blocking inappropriate content, Securly monitors student online activity 24-hours-a-day and alerts district staff when it detects questionable activity such as searches, sites visited, Google Drive contents, or emails sent/received that indicate a student may be considering self-harm, harming others, or are involved in cyber-bullying.

Securly was implemented so the district can partner with families to provide a safer online experience for students. We also needed to gain greater oversight and mastery of our technology program that provides a device for each student in grades K-8 to make sure students are safe and parents are kept informed.



Securly also offers a parent APP called [Securly Home](#) that allows parents to monitor the use of school devices at home. Parents can view recent searches, sites visited, and videos watched on their child's school-owned chromebook, as well as turn internet access on or off, set alerts and sign up for weekly reports. All Glen Hills families have access to the parent APP. Directions for downloading the APP: [Securly Parent Portal APP](#)

[Securly 24](#) integrates with Securly's filter/auditor system to immediately alert authorized district personnel if a student's online activity may indicate a student is using the internet inappropriately, at risk of bullying, or self-harm. Each flagged alert is also reviewed by a risk assessment team at Securly 365 days a year, 24 hours a day. If necessary, the Securly Team will immediately contact appropriate district personnel and/or authorities to ensure student safety. This ensures an additional layer of safety for students and staff outside of the school day.

THE NATIONAL SCHOOL LUNCH PROGRAMS PROVIDES FREE STUDENT LUNCHES IF **ALL** OF THE COMPONENTS ARE TAKEN

**\*\*IF ITEMS ARE TAKEN INDIVIDUALLY, THIS IS CONSIDERED ALA CARTE AND INCURS CHARGE.**

## Meal Pattern Components



Meat/Meat Alternate



Grain



Milk



Fruit



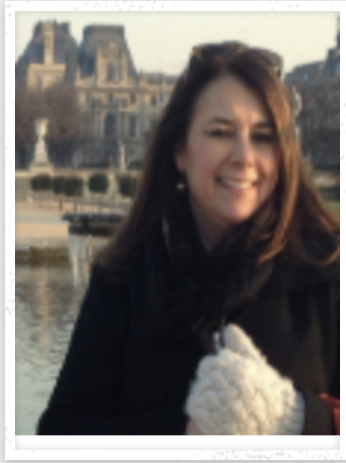
Vegetable

## SPECIAL EDUCATION AUDIT WORK

The districts is happy to announce that Ms. Peggy Black, a consultant who is passionate about working with districts, will be spending time at both Glen Hills and Parkway in the near future. She will have the opportunity to visit classrooms, participate in discussions and converse with the staff about best practices around the three (I's): instruction, inclusion and improvement.

Peggy Black [bio](#)





## **NEWS FROM THE BUSINESS OFFICE**

Interscholastic \$25 participation fee for Basketball and Volleyball will be assessed in Infinite Campus after teams are selected.

For ala-carte purchases: please make sure there is money in your child's lunch account. Payments can be made on Infinite Campus or cash at the front office dropbox.

## **OCTOBER REGULAR SCHOOL BOARD MEETING**

**WHEN**

**WEDNESDAY, OCT. 20TH, 6:30PM**

**WHERE**

**ZOOM LINK BELOW**

**MORE INFORMATION**

<https://us02web.zoom.us/j/81474724965>

## **PTO EVENTS**

SAVE THE DATE

# FALL FEST

Fall Fest is back and it's going to be AMAZING!! We will have food, games, a costume contest and more! Best of all, it's going to be outside so we can safely enjoy each other in the beautiful fall weather.

**Want to help?** The PTO is soliciting donations of prepackaged food. Students can drop off their donations from October 11<sup>th</sup> through 15<sup>th</sup> in the school office:

4k: Hot dog buns

5k: Variety bag of single-serving chips

1<sup>st</sup>: Box of individually wrapped rice crispy treats (cannot be home-made)

2<sup>nd</sup>: Package of juice boxes

3<sup>rd</sup>: Bag of assorted candy

We also will need volunteers the day of the event! Look in Thursday Folders for more volunteer opportunities.

OCTOBER 16

PARKWAY  
SCHOOL  
GROUNDS

3 TO 6 P.M.

Questions? Email:  
[glendale.riverhills.pto@gmail.com](mailto:glendale.riverhills.pto@gmail.com)

## GLEN HILLS FAMILY ACTIVITY NIGHT OCT 20 6-8PM

☐ Checkers ☐ Corn Hole ☐ Tug of war ☐ Hula hoop ☐ Relay race ☐ Basketball ☐ Kick ball ☐ Sidewalk chalk ☐  
And more . . .

## WHAT'S GOING ON IN GDRH??





## MR. WILLIAMS AND MR. NEBEL PIED

Fourth graders absolutely loved being able to pie their Associate Principal and classroom teacher last week. And it was all over a bet made over a multiplication game!



## ALL ARE WELCOME HERE

The GDRH school district believes in doing everything through a lens of equity and ensuring that ALL students are embraced here.



## OVER THE HILLS AND THROUGH THE PARK RUN/WALK

Thank you so much to the Foundation and all of the volunteers who supported and attended this years Run/Walk!

**LIKE GDRH ON FACEBOOK**



**Glendale River Hills SD**

Create @Username · School

+ Add a Button



OCTOBER 14  
2021

# PARKWAY PANTHER PRESS



## National Hispanic Heritage Month

National Hispanic Heritage Month is a period from September 15 to October 15 in the United States. During this time frame, people recognize the contributions and influence of Hispanic Americans to the history, culture, and achievements of the United States. Parkway students had the opportunity to celebrate Hispanic Heritage Month through their amazing artwork which is currently on display in the front entrance at Parkway.



## National Bullying Prevention Month

National Bullying Prevention Month was created to transform a society that accepts bullying into a society that recognizes that bullying must – and can – be addressed through education and support. Together, we are working towards sustaining a kinder, more accepting and inclusive school environment and Glendale community.





# TILLEY TIP

In Mr. Tilley's Social-Emotional classes this week, the students will be wrapping up the K5 - 3rd Grade Zones of Regulation learning which focuses

on the Green Zone. A person may be described as happy, focused, content, or ready to learn when they are in the Green Zone. This is the zone where optimal learning occurs and this is the zone we want students to spend the majority of their day in. The second part of the week in SEL, Mr. Tilley will start "Structured Play" on the playground. The concept behind structured play is to teach students how to play together. Mr. Tilley will spend time teaching students about sportsmanship, cooperation, collaboration, inclusion and kindness during "Structured Play" units which will occur during cooperative games on the playground.

## The ZONES of Regulation®

<b>BLUE ZONE</b> Sad Sick Tired Bored Moving Slowly	<b>GREEN ZONE</b> Happy Calm Feeling Okay Focused Ready to Learn	<b>YELLOW ZONE</b> Frustrated Worried Silly/Wiggly Excited Loss of Some Control	<b>RED ZONE</b> Mad/Angry Terrified Yelling/Hitting Elated Out of Control



Family conferences are a great opportunity to: share academic progress and growth based on classroom observations, testing data, assessments, portfolios, and assignments. Families play an integral part during conferences as you can inform your student's teacher about your students' strengths, needs, behaviors, and learning styles. We look forward to continuing to partner with you throughout the course of the school year, working collaboratively to ensure your student blossoms both socially and academically.

Family Conferences will take place on Oct. 27th from 4PM-8PM, on Oct. 28th from 4PM-8PM and on Oct. 29th from 8AM-12PM. Families will have the opportunity to sign up for a conference using the **teacher's Sign Up Genius LINK**.

**\*Please note, students do not need to attend the family conferences and there is NO SCHOOL for students on Oct. 29th & Nov. 1st.**



I know families completed information online pertaining to whether or not you were comfortable with having your student's picture featured on social media (our Parkway FaceBook page, classroom websites etc.) I want to ensure that we are honoring your requests. If you do not want your student's photo shared on social media sites please email Ms. Perez at: [zena.perez@glendale.k12.wi.us](mailto:zena.perez@glendale.k12.wi.us) and Dr. Smith at: [haydee.smith@glendale.k12.wi.us](mailto:haydee.smith@glendale.k12.wi.us) with the following information:

**1. Student's name. 2. Student's grade level. 3. Student's teacher's name.**

SAVE THE DATE

**FALL  
FEST**

**Fall Fest is back and it's going to be AMAZING!!** We will have food, games, a costume contest and more! Best of all, it's going to be outside so we can safely enjoy each other in the beautiful fall weather. Want to help? The PTO is soliciting donations of prepackaged food. Students can drop off their donations from October 11th through 15th in the school office:

**4k:** Hot dog buns

**5k:** Variety bag of single-serving chips

**1st:** Box of individually wrapped rice crispy treats (*cannot be home-made*)

**2nd:** Package of juice boxes

**3rd:** Bag of assorted candy

We also will need volunteers the day of the event! Look in Thursday Folders for more volunteer opportunities.

**OCTOBER 16**

**PARKWAY  
SCHOOL  
GROUNDS**

**3 TO 6 P.M.**

Questions? Email:  
[glendale.riverhills.pto@gmail.com](mailto:glendale.riverhills.pto@gmail.com)



## Fall Festival Schedule of Events



**3:00** Opening!

**3:00-5:00** Petting Zoo and Pony Rides Available

**3:00-6:00** Bounce House, Games and Food Available

**4:30-5:15** Costume Contest

→ 4:30 K4    → 4:40 K5    → 4:50 1st Grade

→ 5:00 2nd Grade    → 5:10 3rd Grade

**5:30** Pumpkin Carving Contest, 50/50 Raffle, and Raffle Prize Winners Announced. **\*Remember to carve your pumpkin at home to enter in the contest**

**6:00** Fall Festival Ends **\*The building will be open for restroom use only, please bring a mask to enter.**

## Ticket Prices: \$0.25 Per Ticket Bundle 40 Tickets=\$10

Food	# of Tickets
Hot Dog	8
Pizza	8
Chips	4
Rice Crispy	2
Popcorn	6
Pizza Meal Deal	12
Hot Dog Meal Deal	12
Drinks	4
Caramel Apples	8
Cotton Candy	6

Game/Event	Tickets	Game/Event	Tickets
Petting Zoo	8	Ring Toss	1
Pony Rides	8	Bean Bag Toss	1
Bounce House	4	Golfing	1
Tattoos	1	Fishing Game	1
Bowling	1	Raffles	\$1/Ticket
Knock Em Down	1	50/50	\$2 for 1 or \$5 for 3
Football Toss	1	Costume/Pumpkin Carving	0



# RAFFLE PRIZES!

- ❑ Dr. Dawg Party Pack (\$130 Value)
- ❑ 2 Donut Monster Gift Cards (\$20/each)
- ❑ \$50 Brick Gift Card
- ❑ Milwaukee Home Canvas Tote Swag Bag (\$75 Value)
- ❑ Rockin' Jump: 4, 1-hour jump/climb passes and T-Shirt (\$75 Value)



## 50/50 Raffle

Winner announced at 5:30, Must be Present to Collect

If winner does not collect by 5:45 a second winner will be drawn.

If not collected all proceeds will be donated to Parkway Elementary School.



# ISO VOLUNTEERS FOR PARKWAY FALL FEST!

Fall Fest is October 16th from 3-6 pm! And we would love for YOU to volunteer.

We are looking for folks to assist with set up, clean up and all the fun things in between, during the evening of the 15th and before/during/after the event on the 16th. Interested?

Sign up using this link: <https://www.signupgenius.com/go/30E0848ACA92AA5F49-fall>  
Thank you, thank you! The Fall Fest won't be possible without you.

Any questions, feel free to reach out to Danielle Bailey via email:  
[danielle.g.bailey@gmail.com](mailto:danielle.g.bailey@gmail.com) or phone: 414-491-1094

Even if you can't volunteer, we hope you come to have some fun! **See you there!**



## 2021-22 CALENDAR

September 1	First Day of School
September 6-7	No School
September 16	No School
October 27-28	Conferences 4pm-8pm
October 29	No School - Conferences 8am-12pm
November 1	No School - PD for Staff
November 23	End of Trimester
November 24-26	No School - Thanksgiving
December 23 - January 2	No School - Winter Break
January 17	No School
February 21	No School - PD for Staff
March 4	End of Trimester
March 9 & 10	Conferences 4pm-8pm
March 11	No School - Conferences 8am-12pm
March 21 - 25	No School - Spring Break
April 15-18	No School - Late Spring Break
May 30	No School - Memorial Day
June 9	8th Grade Promotion
June 10	Last Day of School for Students End of Trimester

### KEY

 = No School for Teachers & Students

**PD** = Teacher Professional Development Day  
**No School for Students**

**C** = Conferences

**H** = Holiday

**NT** = New Teacher Workday

**ER** = Early Release

11:25am Glen Hills • 12:00pm Parkway

**▲** = Teacher Extended Hours

4:15-5:15 pm - Parkway & Glen Hills

**START** = First Day of School **END** = Last Day of School

**❖** = End of a Trimester - Parkway & Glen Hills

**Student Days = 176.5 Teacher Days = 191.5**

Approved at the 1/20/21 Board Meeting - Amended 5/25/2021

August 2021 S=0 T=5.5 NT=2				
M	T	W	T	F
2	3	4	5	6
9	10	11	12	13
16	17 <b>NT</b>	18 <b>NT</b>	19	20
23	24 <b>PD</b>	25 <b>PD</b>	26 <b>PD</b>	27 <b>PD/ER</b>
30 <b>PD</b>	31 <b>PD</b>			

October 2021 S=20 T=21.5				
M	T	W	T	F
				1
4	5	6	7	8
11	12	13	14	15
18	19	20	21	22
25	26	27 <b>C</b>	28 <b>C</b>	29 <b>C</b>

December 2021 S=16 T=16				
M	T	W	T	F
		1	2	3
6	7	8	9	10
13	14	15	16	17
20	21	22	23	24
27	28	29	30	31

February 2022 S=19 T=20				
M	T	W	T	F
	1	2	3	4
7	8	9	10	11
14	15	16	17	18
21 <b>PD</b>	22	23	24	25
28				

April 2022 S=19 T=20				
M	T	W	T	F
				1
4	5	6	7	8
11	12	13	14	15
18 <b>PD</b>	19	20	21	22
25	26	27	28	29

June 2022 S=7.5 T=8				
M	T	W	T	F
		1	2	3
6	7	8	9	10 <b>END❖ER</b>
13	14	15	16	17
20	21	22	23	24
27	28	29	30	

September 2021 S=19 T=20				
M	T	W	T	F
		1 <b>START</b>	2	3
6 <b>H</b>	7	8	9	10
13	14	15	16	17
20	21	22	23	24
27	28	29 <b>▲</b>	30	

November 2021 S=18 T=20				
M	T	W	T	F
1 <b>PD</b>	2	3	4	5
8	9	10 <b>▲</b>	11	12
15	16	17	18	19
22	23 <b>❖</b>	24	25 <b>H</b>	26
29	30			

January 2022 S=20 T=20				
M	T	W	T	F
3	4	5	6	7
10	11	12 <b>▲</b>	13	14
17	18	19	20	21
24	25	26	27	28
31				

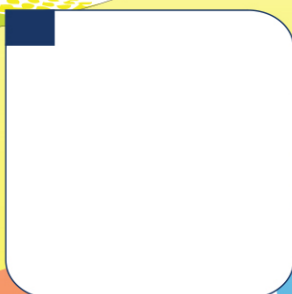
March 2022 S=17 T=18.5				
M	T	W	T	F
	1	2 <b>▲</b>	3	4 <b>❖</b>
7	8	9 <b>C</b>	10 <b>C</b>	11 <b>C</b>
14	15	16	17	18
21	22	23	24	25
28	29	30	31	

May 2022 S=21 T=22				
M	T	W	T	F
2	3	4	5	6
9	10	11 <b>▲</b>	12	13
16	17	18	19	20
23	24	25	26	27
30 <b>H</b>	31			

July 2022				
M	T	W	T	F
				1
4	5	6	7	8
11	12	13	14	15
18	19	20	21	22
25	26	27	28	29



**4**  
**National Taco Day!**  
**Walking Taco**  
Pizza Sticks w/ Marinara  
Muffin, Cheese, &  
Yogurt Pack  
100% Fruit Juice  
Apple Slices  
Corn  
Garbanzo Beans



**5**  
**Soft Beef Tacos**  
**Cheesy Pull Aparts w/ Salsa**  
**Sun Butter & Jelly Sandwich**  
Sliced Tomatoes  
Kickin' Pinto Beans  
Pears  
Applesauce



**6**  
**Cheese Pizza**  
**Hamburger**  
**Chicken Ranch Wrap**  
  
Green Peas  
Romaine Salad w/ Ranch  
Peaches  
Fresh Orange



**7**  
**Pancakes w/ Sausage Patties**  
**Turkey & Cheese Melt**  
**Taco Salad w/ Dinner Roll**  
Orange Juice  
Tater Tots  
Broccoli  
Applesauce

**1**  
**Chicken Nuggets**  
**Turkey Hot Dog**  
**Muffin, Cheese, & Yogurt Pack**  
  
100% Fruit Juice  
Mixed Fruit  
Waffle Fries  
Baby Carrots

**11 NATIONAL SCHOOL LUNCH WEEK!**  
**\*Chicken Nuggets**  
**Hamburger**  
**Muffin, Cheese, & Yogurt Pack**  
Mashed Potatoes  
Corn  
100% Fruit Juice  
**Red Day! Strawberries**

**12**  
**\*Chicken Nachos**  
**Turkey Hot Dog**  
**Peach Yogurt Parfait w/ Granola & Graham Crackers**  
Broccoli  
**Orange day! Baby carrots**  
Peaches  
Apple Slices

**13**  
**BBQ Pork Rib Sub**  
**Popcorn Chicken w/ Dinner Roll**  
**Turkey & Cheese Sub**  
Baked Beans  
Celery Sticks  
**Yellow Day! Fresh Banana**  
Applesauce

**14**  
**Waffles w/ Egg Omelet**  
**\*Mini Corn Dogs**  
**Popcorn Chicken Salad w/ Dinner Roll**  
Orange Juice  
Smile Potatoes  
**Green day! Green Beans**  
Pears

**15**  
**Fish Patty Melt**  
**Grilled Chicken Sandwich**  
**Pretzel, Cheese, & Yogurt Pack**  
100% Fruit Juice  
**Blue day! Blueberries**  
Baby Carrots  
Green Peas  
**Dessert: Rainbow Sprinkle Cookie!**

**18**  
**Pizza Sticks w/ Marinara**  
**Grilled Cheese**  
**Muffin, Cheese, & Yogurt Pack**  
  
Celery Sticks  
Sliced Carrots  
100% Fruit Juice  
Mixed Fruit

**19**  
**Chicken Fajita**  
**Chicken Patty**  
**Parmesan Melt**  
**Sun Butter & jelly Sandwich**  
Kickin' Pinto Beans  
Romaine Salad  
Apple Slices  
Pears

**20**  
**Cheese Pizza**  
**BBQ Chicken Sandwich**  
**Turkey & Cheese Sandwich**  
  
French Fries  
Red Pepper Strips  
Fresh Apple  
Peaches

**21**  
**French Toast Sticks w/ Syrup & Sausage Patties**  
**Hamburger**  
**Chicken & Cheese Salad w/ Dinner Roll**  
Tater Tots  
Orange Juice  
Green Beans  
Mixed Fruit

**22**  
**Spicy Chicken Patty**  
**Meatball sub**  
**Make-Your-Own Cheese Pizza Bagel**  
Fruit Juice  
Fresh Orange  
Broccoli  
Baby Carrots

**25**  
**Chicken Tenders**  
**Hamburger**  
**Muffin, Cheese, & Yogurt Pack**  
  
Mashed Potatoes  
100% Fruit Juice  
Baby Carrots  
Mixed Fruit

**26**  
**Beef Nachos**  
**Cheesy Pull Aparts w/ Salsa**  
**Turkey & Cheese Sub**  
  
Romaine Salad w/ Ranch  
Sliced Tomatoes  
Peaches  
Apple Slices

**27 National Potato Day!**  
**Chicken Drumstick**  
**BBQ Pork Rib Sub**  
**Sun Butter & jelly Sandwich**  
Baked Beans  
**Smile Potatoes**  
Strawberries  
Applesauce

**28**  
**Pancakes w/ Egg Omelet**  
**Turkey & Cheese Melt**  
**Chicken Ranch Wrap**  
  
Orange Juice  
Corn  
Cucumber Slices  
Pears

**29**  
  
**NO SCHOOL**

Celebrate National School Lunch Week with us October 11-15th! Our event "*Taste the Rainbow*" will feature a different color daily for fruits and vegetables and a fun educational opportunity for students to learn about the nutrition of fruit and vegetables and try something new!  
\*We will also be serving some of our favorite school lunch entrees!

Looking for a part-time position? Work for Aramark! No nights, weekends, or holidays!  
Contact Aramark at 414.351.7160 x 2145 or [maritato-meagan@aramark.com](mailto:maritato-meagan@aramark.com)  
Menu is based on product availability and is subject to change.

LOOKING FOR A WAY TO SAY

# THANK YOU

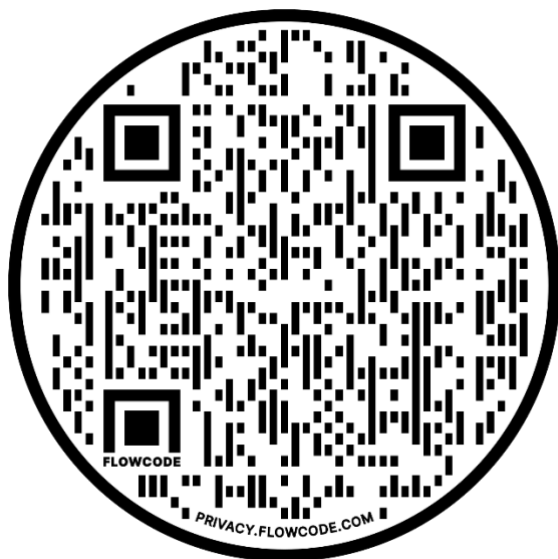
TO YOUR GLEN HILLS AND  
PARKWAY TEACHERS?

## Buy Your Teacher Dinner for Fall Parent Teacher Conference!

Buy your teacher dinner for Parent/Teacher Conferences with the PTO on March 11th! Dinner is being catered by The Gyro Palace in Glendale and costs \$10.00 for each Teacher and Staff member. You can designate which teacher you want to buy dinner for or do a general donation. All the extra money raised will be used to fund teacher grants so they can enhance their classrooms.

Just click here: <https://my.cheddarup.com/c/buy-your-teacher-dinner-copy>

Or scan:

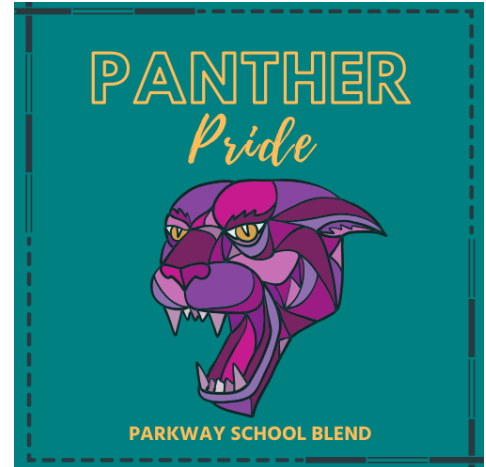




Hello Parkway and Glen Hills Families!

The Stone Creek/Rishi Tea fundraiser is back. We hope you will take advantage of purchasing some great local products for yourselves and for gifts during this holiday season to support the Parkway/Glen Hills PTO. Notice the striking custom label pictured at right, "Panther Pride Blend," designed by one of our very own Glen Hills moms.

We profit \$6 on each bag of coffee sold, \$1-\$10 on a gift card depending on the amount, and \$3 on each tea or hot cocoa sale. *If each of our children sold just one bag of coffee, we would net around \$6000* for our PTO, who is continuing to work tirelessly and creatively to support our students and staff in these unique and challenging times.



### **What are we selling?**

See the back of the attached order form for full descriptions of the coffees/teas available. The custom label is the Cream City Blend (medium roast). Both Stone Creek and Rishi Tea are local to Milwaukee and take great pride in who and where their products come from and how they are produced. **And due to the overwhelming success of last year, we have \$10-\$100 Stone Creek gift cards available for your personal use or holiday gifting purposes!**

### **How should my customers pay?**

With digital payment, cash or a check **MADE OUT TO YOU PERSONALLY**. You then make out a single check to the PTO (see below) when you submit your order.

### **Where/When do I submit orders?**

Submit all orders to the Parkway or Glen Hills office *no later than* 3 pm on November 12, 2021. A SEALED ENVELOPE containing:

- 1) Completed order form with your NAME, EMAIL AND PHONE NUMBER.
- 2) TOTAL AMOUNT of sales in cash and/or **check made out to Parkway/Glen Hills PTO.**

### **Where do I pick up my orders?**

Pick up (for Glen Hills families also) at **Parkway on December 4th, 2021 from 9 am-12 pm.**

### **What's in it for me?**

Quality, local products, and if you sell \$100 worth of products, you'll be entered into a drawing for a coffee gift basket!

### **What if I don't want to sell coffee (or pretzels, or anything else!)?**

If you want to support the students and teachers of this district without participating in this fundraiser, you can make a tax deductible donation to Parkway/Glen Hills PTO.

**Paper copies of the fundraiser sheet available at the front office upon request.**

**Direct questions or concerns to Nicole Giese ([nicolekgiese@gmail.com](mailto:nicolekgiese@gmail.com)) or Mindy Schroeder ([mindy.a.schroeder@gmail.com](mailto:mindy.a.schroeder@gmail.com)).**

# STONE CREEK COFFEE



## Fundraising Sellers Guide

### Coffees (\$15.50)


	<b>COFFEE</b> Green Dragon Costa Rica	<b>ROAST</b> Light
	<b>FLAVOR</b> Sweet	<b>EXPERIENCE</b> Delicate
	<b>BODY</b> 3/5	<b>BRIGHTNESS</b> 2/5

	<b>COFFEE</b> Cream City	<b>ROAST</b> Medium
	<b>FLAVOR</b> Fruity	<b>EXPERIENCE</b> Chocolate
	<b>BODY</b> 4/5	<b>BRIGHTNESS</b> 3/5


	<b>COFFEE</b> 3 Volcanoes Dark Guatemala	<b>ROAST</b> Dark
	<b>FLAVOR</b> Chocolate	<b>EXPERIENCE</b> Smooth
	<b>BODY</b> 4/5	<b>BRIGHTNESS</b> 1/5

	<b>COFFEE</b> Decaf Cream City	<b>ROAST</b> Medium
	<b>FLAVOR</b> Fruity	<b>EXPERIENCE</b> Chocolate
	<b>BODY</b> 4/5	<b>BRIGHTNESS</b> 3/5


### Rishi Teas (\$11.50)

	<b>TEA</b> Earl Grey	<b>TYPE</b> Black
	<b>TASTING NOTES</b> Smooth and lively with the unique citrusy, floral aroma of bergamot oranges.	


	<b>TEA</b> Matcha Super Green	<b>TYPE</b> Green
	<b>TASTING NOTES</b> An energizing blend of matcha and sencha with a deep sweetness and smooth, umami richness.	


	<b>TEA</b> Turmeric Ginger (Caffeine-Free)	<b>TYPE</b> Herbal
	<b>TASTING NOTES</b> An enlivening blend of golden turmeric with spicy ginger and zesty citrus.	


### Hot Chocolate (\$8.00)


	<b>NAME</b> Stone Creek Coffee Hot Chocolate	
	<b>TASTING NOTES</b> Direct-trade Ghanaian Hot Cocoa Mix created just for us by Omanhene.	

### Gift Cards

	<b>NAME</b> Stone Creek Coffee Gift Card
	<b>AMOUNT</b> \$10
	<b>DESCRIPTION</b> For use at any Stone Creek Coffee cafe. Not redeemable online.

	<b>NAME</b> Stone Creek Coffee Gift Card
	<b>AMOUNT</b> \$25
	<b>DESCRIPTION</b> For use at any Stone Creek Coffee cafe. Not redeemable online.

	<b>NAME</b> Stone Creek Coffee Gift Card
	<b>AMOUNT</b> \$50
	<b>DESCRIPTION</b> For use at any Stone Creek Coffee cafe. Not redeemable online.

	<b>NAME</b> Stone Creek Coffee Gift Card
	<b>AMOUNT</b> \$100
	<b>DESCRIPTION</b> For use at any Stone Creek Coffee cafe. Not redeemable online.

# STONE CREEK COFFEE

Fundraising Sell Sheet - **WE'RE FUNDRAISING TO RAISE MONEY FOR:**

Seller's Name: \_\_\_\_\_

Seller's Phone: /email: \_\_\_\_\_

Return Sell Sheet On: By 3 pm on November 12, 2021

Coffee Delivery Date: 9am-12pm on December 4th, 2021

Group Name: Glen Hills & Parkway Elementary School Fundraiser

Group Leader: Nicole Giese - nicolekgiese@gmail.com

Group Phone: 414-213-6060

Make Checks Payable To: Parkway/Glen Hills PTO

[illegible]



#BENIAMSTRONG



# FUN 5K RUN

TO BENEFIT

OR 1 MILE WALK/ROLL

BEN IAMMARTINO



**SUNDAY,  
OCTOBER 17  
STARTS AT 10AM**

Warm up with a 1 lap roll  
around the track with Ben!

Held at Nicolet High School  
located in Glendale, WI.

**REGISTER NOW!**

**5K RUN OR  
1 MILE WALK/ROLL**

- Early bird - \$35\*
- \* Register before Sept 24 and receive  
a red Snapback baseball cap with logo
- Registration - \$40 (Oct 1)
- Day of event - \$45



**SCAN TO  
REGISTER**





# NOW HIRING

• • •

## School Bus Drivers

Parents & Coaches: We need your help!

HELP YOUR COMMUNITY

• • • •

We will donate  
to your  
organization if  
you refer a bus  
driver for hire!



### OFFERING

- Paid training
- Child ride-alongs
- 401(k) match
- Excellent safety record
- Teamwork mindset
- Flexible schedule



To apply to be part of our team, please visit  
**[goriteway.com/drivers](https://goriteway.com/drivers)**!

Family-owned & operated since 1957





Dear Parkway and Glen Hills Families,

The PTO is back! Well, honestly, we never left. We weren't able to hold any of our fun activities last year, but we kept busy getting school masks for all the students, organizing teacher dinners at conference times, raising money for a Gaga pit at Parkway, and coordinating the school supply pack sale.

But this year, case numbers are down in our area, our volunteers are vaccinated, and we are so excited to do things together, as a community. Here are some things you should know:

- We need your directory information! To create a school directory, we need your help! The school cannot give us student information. We will not publish any information you do not want us to publish, but if you want your kid invited to play-dates and birthday parties, please fill out the online form here: [https://docs.google.com/forms/d/e/1FAIpQLSff3GGtgElErfx-oBs8yMRJoGw-P\\_scr6AUae7BOqdARWDMAQ/viewform?vc=0&c=0&w=1&flr=0&usp=mail\\_form\\_link](https://docs.google.com/forms/d/e/1FAIpQLSff3GGtgElErfx-oBs8yMRJoGw-P_scr6AUae7BOqdARWDMAQ/viewform?vc=0&c=0&w=1&flr=0&usp=mail_form_link)
- We're doing less fundraising. The wrapping paper/cookie dough fundraiser has not been a huge success, so we are letting it go. You will have a chance to fundraise later in the year when we sell Coffee and Pretzels again. Otherwise, you are always welcome to make a tax-deductible donation to the PTO.
- We're planning events again! We want to bring back Fall Fest for Parkway students, and Family Activity Nights for Glen Hills students – but we need help! Please email [glendale.riverhills.pto@gmail.com](mailto:glendale.riverhills.pto@gmail.com) if you would like to join a planning committee for either event.
- We have a lot of opportunities to make a difference. It doesn't matter if you want to spend all day volunteering at the school, or you have ten minutes to make a call over your lunch break, or you just want to send a check and forget it – the PTO is grateful for whatever support you give us.

Please join us at our meetings on the second Monday of every month in the Glen Hills Commons, from 6:15 PM to 7:00 PM to learn about all the great opportunities we have. There will be a play area for children. Masks and social distancing are required. Our first meeting is next week, September 13<sup>th</sup>.

You can also follow us on Facebook and read all our announcements in the Thursday Folders.

Sincerely,

Melanie Hinchey

Parkway/Glen Hills PTO President



## GLEN HILLS/PARKWAY PTO DIRECTORY INFORMATION & MEMBERSHIP FORM

OUR MISSION: To make a difference in our children's education through involvement at home, in school and in the community!

### Parent/Guardian Information:

Last name	First Name	
Last name	First Name	
Address		
City	State	Zip
Primary phone	Primary email	
Secondary phone	Secondary email	

### Children Enrolled at Parkway and Glen Hills:

Last name	First name	Grade
Last name	First name	Grade
Last name	First name	Grade
Last name	First name	Grade
Last name	First name	Grade

### School Directory Confidentiality:

Check all that apply. Anything *not* checked will be printed in the directory:

- ☐ Do NOT print my home address in the directory
- ☐ Do NOT print my email address in the directory
- ☐ Do NOT print my phone number in the directory
- ☐ Do NOT print parent/guardian names in the directory



### Membership:

PTO Membership costs \$10 and includes 1 free copy of the School Directory. Additional Directories are available for \$5 each.

\_\_\_\_\_ 1 Directory (\$10)      \_\_\_\_\_ 2 Directories (\$15)      \_\_\_\_\_ 3 Directories (\$20)

Payment can be made by cash, check payable to "Glen Hills/Parkway PTO", or digitally by following this QR code.

\_\_\_\_\_ Check /Cash      \_\_\_\_\_ Digital\*

Paid on \_\_\_\_\_

\*Digital payments cost the PTO 80 cents per transaction.  
Please consider checking the 'Cover Fees" box.



### Contact me if you need someone to:

- ☐ Join a committee organizing large events (email and phone only, unless the committee decides to meet)
- ☐ Show up and help out (usually a 1 hour commitment, there are many opportunities throughout the year)
- ☐ Coordinate vendors (for example, ordering teacher conference dinners or organizing fundraising)

You are not committing to anything, just letting us know what opportunities interest you. We will contact you with more information.

PTO meetings are held at 6:15 pm on the second Monday of the month in the Glen Hills Library.  
Free babysitting is provided!





# PATH TO RESILIENCE



Your **REDgen Student Chapter** is hard at work advocating for strategies to develop resilience in your school. We are excited to provide the opportunity for parents and their teen to engage together to build resilience.

**Sign up for this "Path to Resilience" live online course** hosted by Wholly Mindful to learn and develop these strategies for yourself and with your teen:

- Dealing with stress
- Calming the mind/body

- Increasing well-being
- Learning self-compassion

Only \$30 per parent and teen as REDgen will subsidize the cost of this course.

**Wednesdays: Oct. 13-Nov. 17  
8:00pm - 9:00pm CST**

[Click here to register!](#)

**[www.WhollyMindful.com](http://www.WhollyMindful.com) | [www. REDgenSchool.org](http://www.REDgenSchool.org)**

# NICOLET RECREATION DEPARTMENT

**New!**



## MINECRAFT WORLD BUILDER

Minecraft economy has never been as exciting as Minecraft World Builder, in this class you will learn how to run a city, manage money, protect the environment, all within the 3D world of Minecraft!

This camp is not coding-based but more real-world economics, city planning, and life management! In Minecraft World Builder, you will be a part of a committee and learn to manage money by building onto your ever-growing city with your peers. All by using the Minecraft World Builder mods!

Your child will learn real-life money management, town designing, environment protection, public speaking, presentation skills, and economics all within the very popular 3D video game Minecraft. A PC or a Mac is required, Chromebook will not work for this class.

**Wednesdays | October 27 - December 1 | 5:30 - 6:30pm**

**Virtual | 6 - 12 years old**

**\$174.00R/\$194.00NR | Program#: 112108-01**

**Instructor: Code Wiz Staff | Min/Max: 1/10**

**REGISTER ONLINE AT:  
[HTTPS://WEB2.VERMONTSYSTEMS.COM/NICOLET.HTML](https://web2.vermontsystems.com/nicolet.html)**

Nicolet Recreation Department | 6701 N. Jean Nicolet Rd. Glendale, WI 53217  
Phone: (414) 351-7566 | Fax: (414) 351-4053  
Website: <https://www.nicolet.us/activities/recreation.cfm>



**Find us on  
facebook**

# NICOLET RECREATION DEPARTMENT



## YOUTH PAINTING CLASS

**Do you have a mini Picasso? We have just the thing! Children will explore their creative side while following step by step instructions to create their very own masterpiece. Instructions courtesy of Grape Escape LLC.**

**Saturday | Oct. 16; Nov. 13; Dec. 11**

**Nicolet High School - Room B111 | 6 - 12 years old**

**\$22.00R/\$32.00NR | Program#: 112150-02, 03, 04**

**Instructor: Briona Conway | Min/Max: 5/20**

**REGISTER ONLINE AT:**

**[HTTPS://WEB2.VERMONTSYSTEMS.COM/NICOLET.HTML](https://web2.vermontsystems.com/nicolet.html)**





# Swing into **SPANISH**

## with an **ALL NEW**

### **Spanish**

### **Adventure!**



Students learn best when the topic is interesting or applicable to their everyday lives!

## Let's Play & Let's Go Camping... **¡EN ESPAÑOL!**

- Theme-Based Learning is Developmentally Beneficial
- Practical, Real-World Spanish Conversation Skills
- Increase Your Child's Cultural Sensitivity
- Weekly Parent Newsletters & Optional Homework



**SCAN TO ENROLL**

**REGISTER ONLINE:** <https://web2.vermontsystems.com/nicolet.html>

Full Year tuition: \$240R/ \$270NR  
Fall Semester only tuition: \$145R/ \$165NR

**Register for  
the full year  
and save on  
tuition!**

**Indian Hill Elementary** (K4-2<sup>nd</sup> Grade)  
**Day/Time:** Tuesdays, 3:35pm – 4:35pm  
**Fall Dates:** 10/12, 10/19, 10/26, 11/2, 11/9, 11/16, 11/23, 11/30  
**Spring Dates:** 2/8, 2/15, 2/22, 3/1, 3/8, 3/15, (skip 3/22), 3/29, 4/5  
**Program#:** Fall (110221-01) - Optional Full Year (110221-02)

**Parkway Elementary** (K4-3<sup>rd</sup> Grade)  
**Day/Time:** Mondays, 2:40pm – 3:40pm  
**Fall Dates:** 10/11, 10/18, 10/25, (skip 11/1), 11/8, 11/15, 11/22, 11/29, 12/6  
**Spring Dates:** 2/7, 2/14, (skip 2/21), 2/28, 3/7, 3/14, (skip 3/21), 3/28, 4/4, 4/11  
**Program#:** Fall (110220-01) - Optional Full Year (110220-02)

► Appropriate for students with or without previous Spanish experience.

► Space is limited! - Deadline to register: One week prior to first class.

► Parent Portal: Newsletters and Optional Homework available online for immediate access (included with tuition). Password will be email with class confirmation about 24-48hrs before 1<sup>st</sup> class.

► Tuition is non-refundable. No refunds/credits will be given on or after the first day of class. Questions contact us at 262-719-9332.